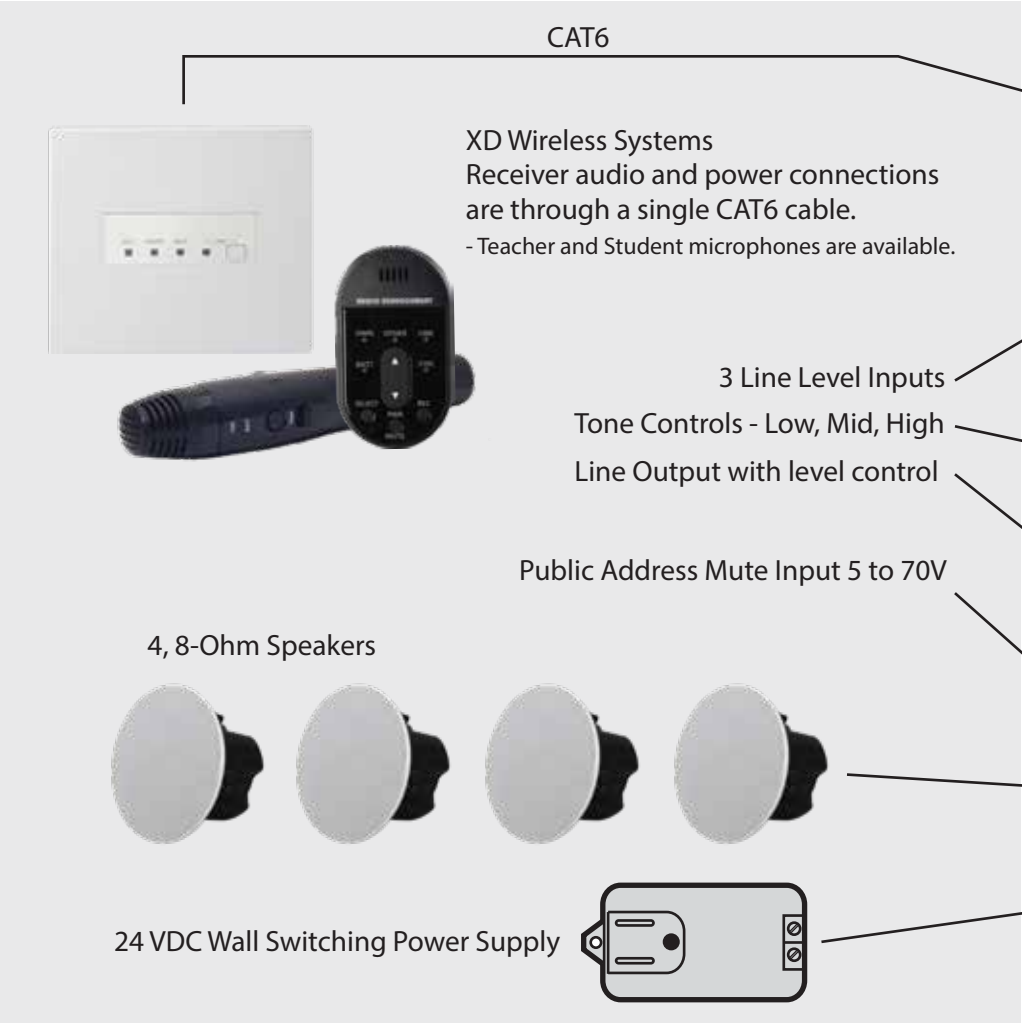


XD CA-60 Amplifier Quick-Start Manual



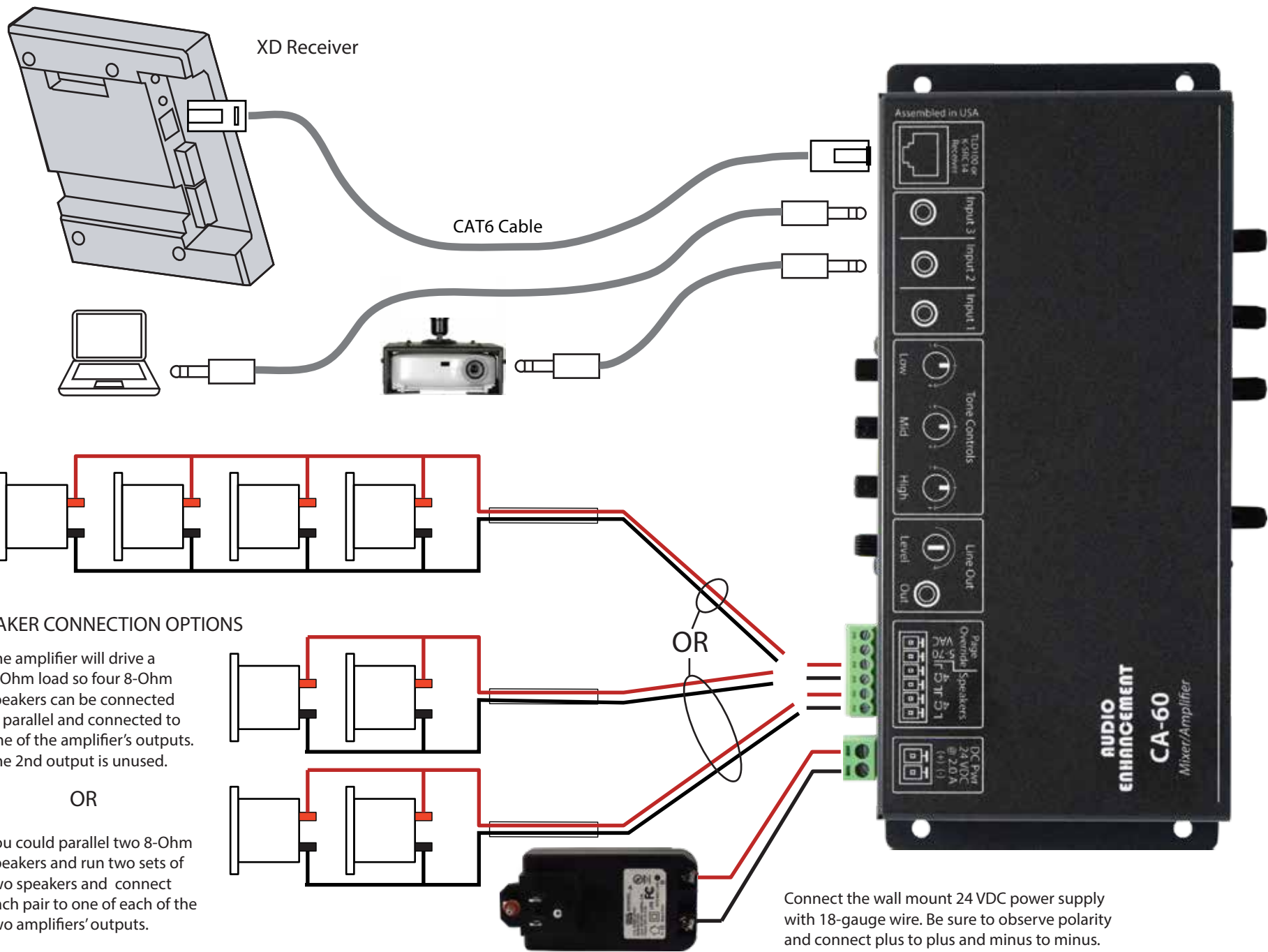
Convenience Line Input Connector



Input level controls for three Line Level Inputs

ALD Assisive Listening Device Output with level control

Eco Mode Power Saving Indicator



SPEAKER CONNECTION OPTIONS

The amplifier will drive a 2-Ohm load so four 8-Ohm speakers can be connected in parallel and connected to one of the amplifier's outputs. The 2nd output is unused.

OR

You could parallel two 8-Ohm speakers and run two sets of two speakers and connect each pair to one of each of the two amplifiers' outputs.

Connect the wall mount 24 VDC power supply with 18-gauge wire. Be sure to observe polarity and connect plus to plus and minus to minus.

Remote Volume Control of the Teacher and Student Microphones

Teacher Microphone (OWN) Level Adjustment



Press either the UP or DOWN arrow button to increase or decrease the level of the Teacher microphone. A blue LED over the **OWN** (for own microphone) will flash with each press.

The "SELECT" button determines which level will be controlled by the UP/DOWN buttons

Student Microphone (OTHER) Level Adjustment



To adjust the Student Microphone (**OTHER**) volume, first press the **SELECT** button so that the LED over the **OTHER** label comes on. Now press the UP/DOWN buttons to control the level of the **OTHER** microphone, which is typically the Student Microphone.

Multimedia Level Adjustment



Selecting the LINE audio source will control the volume of audio devices that you have plugged into the "Line In" input on the XD receiver.

Pairing Microphones to Your Receivers

Your XD microphones should already be paired to the receiver. You can check this by turning on your Teacher and Student Microphones (Teacher Mic: press PWR for 1 second; Student Mic: flip TALK switch up). If the LED under the BATT indicator turns green, the mic is paired. If the LED blinks another color (orange), then turn off your microphones and use the following instructions to pair them to the receiver.



Teacher Microphone

- Turn mic off: press and hold **PWR/MUTE** until the green BATT light extinguishes.
- Press the **LINK** button on the receiver (LINK LED will blink yellow).
- Press and hold the **PWR/MUTE** and **REC** buttons on the Teacher Microphone until the microphone links. You will know it is linked when the BATT LED on the microphone and LINK LED on receiver glow green and an audible beep will sound through the speakers.



Student Microphone

- Turn mic off: flip the **TALK** switch down. The green BATT light will extinguish.
- Press the **LINK** button on the receiver (LINK LED will blink yellow).
- Press and hold the **LINK** button and flip up the **TALK** switch on the Student Microphone until the microphone links. You will know it is linked when the BATT LED on the microphone and LINK LED on receiver glow green and an audible beep will sound through the speakers.

