

# XD SOLO<sup>®</sup>

## QUICK START GUIDE



1" Tweeter

8" Woofer

MP3 Player and  
Bluetooth Indicator

ALD Line Output

Master Volume  
*Set at 12 o'clock or higher*

Voice Override Button

Charging Power Connector

Microphone\*  
Linking Button

Tone Controls

Line Audio In

Battery Level Monitor

Power Switch



# LINKING XD TEACHER MICROPHONE TO THE XD SOLO®

1. With the microphone off, press the *Link* button on the back of the XD Solo® (Large red button).
2. Press and hold the *PWR/MUTE* and *REC* buttons on the Teacher Microphone until the microphone links.



3. Successful microphone linking will produce a *beep* through the system, and the *BATT* LED on the microphone will glow green.



# LINKING XD STUDENT MICROPHONE TO THE XD SOLO®

1. With the microphone off, press the *Link* button on the back of the XD Solo® (Large red button).
2. While holding, use your thumb to slide the *TALK* button up into the on position.



3. Successful microphone linking will produce a *beep* through the system, and the *BATT* LED on the microphone will glow green.



# REMOTE VOLUME CONTROL OF MICROPHONES

## XD TEACHER MICROPHONE (OWN) LEVEL ADJUSTMENT

Press either the *UP* or *DOWN* arrow button to increase or decrease the volume level of the Teacher Microphone. A blue LED over the *OWN* (for own microphone) will flash with each press.

Volume Up

Volume Down



The *SELECT* button determines which level will be controlled by the *UP/DOWN* buttons.

## XD STUDENT MICROPHONE (OTHER) LEVEL ADJUSTMENT

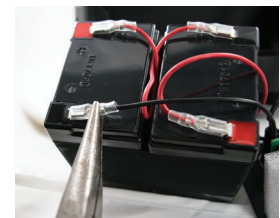
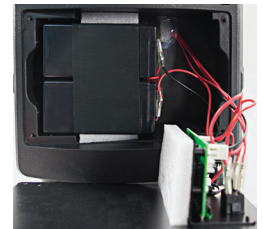
To adjust the XD Student Microphone (*OTHER*) volume, first press the *SELECT* button so that the LED over the *OTHER* label comes on. Now press the *UP/DOWN* buttons to control the level of the *OTHER* microphone.



# BATTERY REPLACEMENT

Make sure the power cable is unplugged and the power switch is in the *OFF* position before changing the batteries. Only replace with batteries that are the same size and rating as the original (12V - 2.8 AH Sealed Lead Acid).

1. On the back of the XD Solo®, you will see a large black plate. Remove the 4 screws around the edge of the plate.
2. Once you remove the plate, carefully pull the batteries out far enough to reach the wires. Notice that wires are color coded red for the *Positive(+)* terminal and black for the *Negative(-)*. Carefully pulling on the wire clip, detach the wires from one battery and reattach to the same terminals on the replacement battery. Repeat this step for the next battery. This is easiest with needle nose pliers.
3. When sliding the batteries back into the compartment, watch to make sure the wires do not pull away from the battery's terminals. If this occurs, gently push the connector with a link pair of pliers to get a tighter fit.
4. Although the replacement batteries are charged, it's still suggested to charge the XD Solo for at least 12 hours before use.



## REMINDER

A good tip to prolong the life of your batteries is to leave the XD Solo plugged into AC power when not in use. This will ensure you always have a fully charged unit and will prevent the batteries from self-discharging. The XD Solo has an overcharge circuit so leaving the unit plugged in will not hurt the batteries or the unit.



# BLUETOOTH PAIRING

1. Press the *power/MODE* button to activate the *Bluetooth* function. Press the *power/MODE* button again to turn the Bluetooth function off.
2. When the Bluetooth function is activated successfully, the screen will show "*Bluetooth Disconnected*", then it is ready to pair.
3. Activate the Bluetooth connection on any Bluetooth capable device.
4. Find the device name "*TQ8*" on the pairing list to connect the device.
5. When the pairing is successful, the speaker will emit a tone and the screen will show "*Connected.*"
6. The speaker is ready to stream audio from the device.

