

16 Watt amplifier can power 2 or 4 speakers

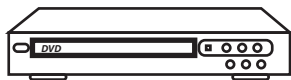


Optional XD wireless system. Receiver audio and power connect through a single CAT 5/6 cable.

Teacher and student microphones are available.



Accepts line level inputs from typical media sources



DVD Players

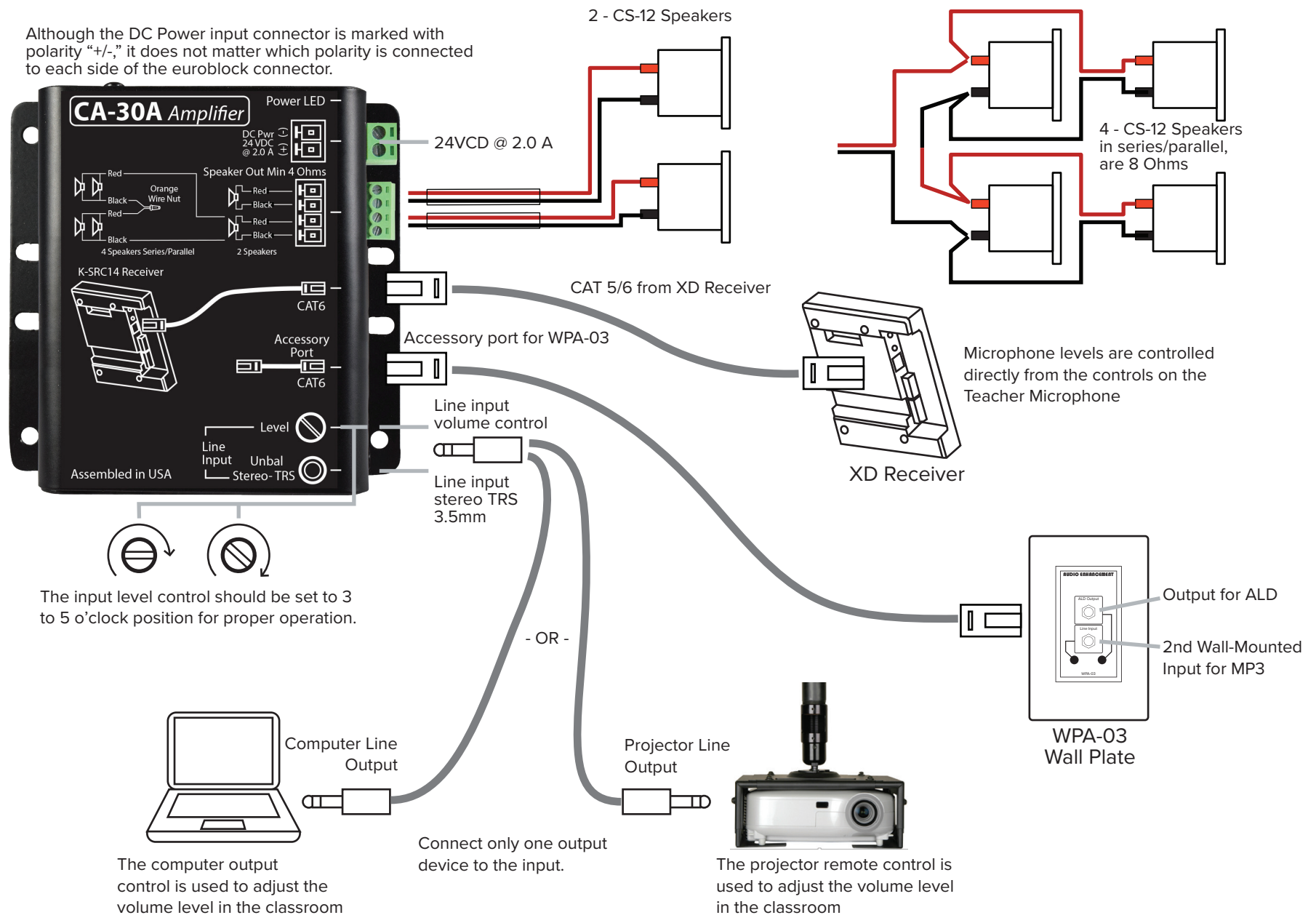


Computers



Projectors

Although the DC Power input connector is marked with polarity "+/-," it does not matter which polarity is connected to each side of the euroblock connector.



The input level control should be set to 3 to 5 o'clock position for proper operation.



The computer output control is used to adjust the volume level in the classroom

Connect only one output device to the input.



The projector remote control is used to adjust the volume level in the classroom

Call Audio Enhancement at 800.383.9362 for more wiring diagrams

## Remote Volume Control of the Teacher and Student Microphones

### Teacher Microphone (OWN) Level Adjustment

Press either the UP or DOWN arrow button to increase or decrease the level of the Teacher microphone. A blue LED over the **OWN** (for own microphone) will flash with each press.



The "SELECT" button determines which level will be controlled by the UP/DOWN buttons

### Student Microphone (OTHER) Level Adjustment

To adjust the Student Microphone (**OTHER**) volume, first press the **SELECT** button so that the LED over the **OTHER** label comes on. Now press the UP/DOWN buttons to control the level of the **OTHER** microphone, which is typically the Student Microphone.



### Multimedia Level Adjustment

Selecting the **LINE** audio source will control the volume of audio devices that you have plugged into the **MIC IN** and **AUDIO IN** inputs on your microphones.



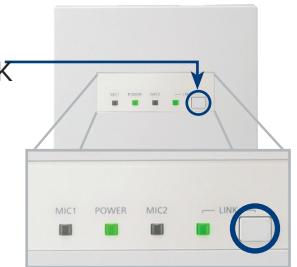
## Pairing Microphones to Your Receivers

Your XD microphones should already be paired to the receiver. You can check this by turning on your Teacher and Student Microphones (Teacher Mic: press PWR for 1 second; Student Mic: flip TALK switch up). If the LED under the BATT indicator turns green, the mic is paired. If the LED blinks another color (orange), then turn off your microphones and use the following instructions to pair them to the receiver.



### Teacher Microphone

- Turn mic off: press and hold **PWR/MUTE** until the green BATT light extinguishes.
- Press the **LINK** button on the receiver (LINK LED will blink yellow).
- Press and hold the **PWR/MUTE** and **REC** buttons on the Teacher Microphone until the microphone links. You will know it is linked when the BATT LED on the microphone and LINK LED on receiver glow green and an audible beep will sound through the speakers.



### Student Microphone

- Turn mic off: flip the **TALK** switch down. The green BATT light will extinguish.
- Press the **LINK** button on the receiver (LINK LED will blink yellow).
- Press and hold the **LINK** button and flip up the **TALK** switch on the Student Microphone until the microphone links. You will know it is linked when the BATT LED on the microphone and LINK LED on receiver glow green and an audible beep will sound through the speakers.

