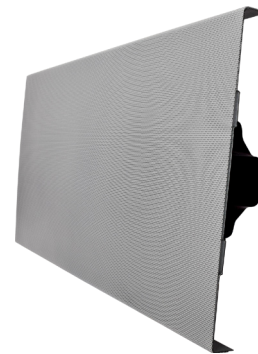


Speaker Grill

Front View



Angled View



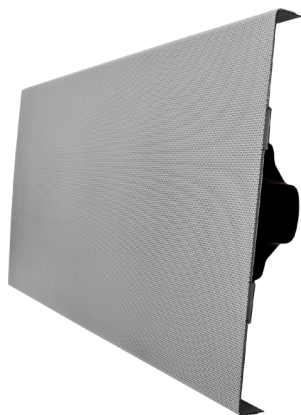
Side View



The **Flat Speaker** (FS-17) has a tuned ported enclosure that provides superior bass response while maintaining efficiency. Metal speaker back meets UL 2043 criteria for plenum installation. The 1 ft. x 2 ft. speaker grill fits in a standard 2-foot ceiling tile grid for a fast and easy installation. One 2 ft. T-rail included.

One T-Rail included with each FS-17 speaker





Speaker Specifications

Frequency Response	70 Hz to 15 kHz (-10 dB) 100 Hz to 14 kHz +/- 2 dB
Power Handling	50 W continuous pink noise
Sensitivity	88 dB 1 Watt / 1 Meter
Impedance	8 Ohms nominal
Type	Vented enclosure
UL 2043	Speaker back can meets UL 2043 criteria for plenum installation
Speaker Weight	7 lbs. (3.18 kg)
Speaker Dimensions	Depth 5.5 in. (139.7 mm) Grill Dimensions 24 in. W x 12 in. H (609.6 mm W x 304.8 mm H) *Fits in a standard 2-foot ceiling tile grid
T-Rail Weight	0.25 lbs. (0.12 kg)
T-Rail Dimensions	Depth 1.25 in. (31.8 mm) 25 in. W x 1 in. H (635 mm W x 25.4 mm H)



Back can is RoHS and UL compliant.

