



Share your success!



Audio Enhancement

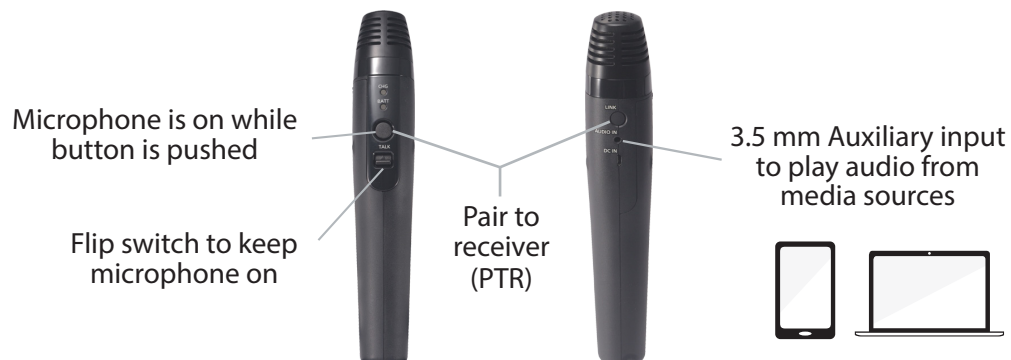
# Microphone

## Quick Start Guide

### Teacher Microphone



### Student Microphone



## Microphone LEDs Key

### BATT LED

*Green, solid*  
On

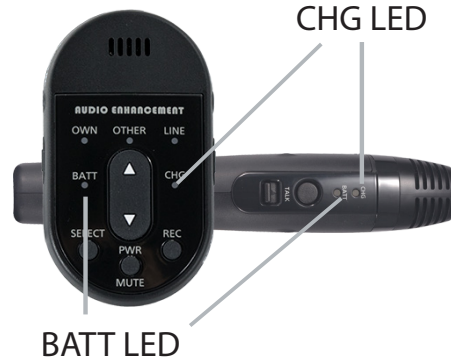
*Green or orange, blinking*  
Pairing to receiver, or  
Microphone is muted

*Yellow, solid*  
Low battery

*Yellow, blinking*  
Out of range

*Red, solid*  
Depleted battery

*Red, blinking*  
Pairing error



### CHG LED

*LED on*  
Charge is complete, or  
Battery is fully depleted

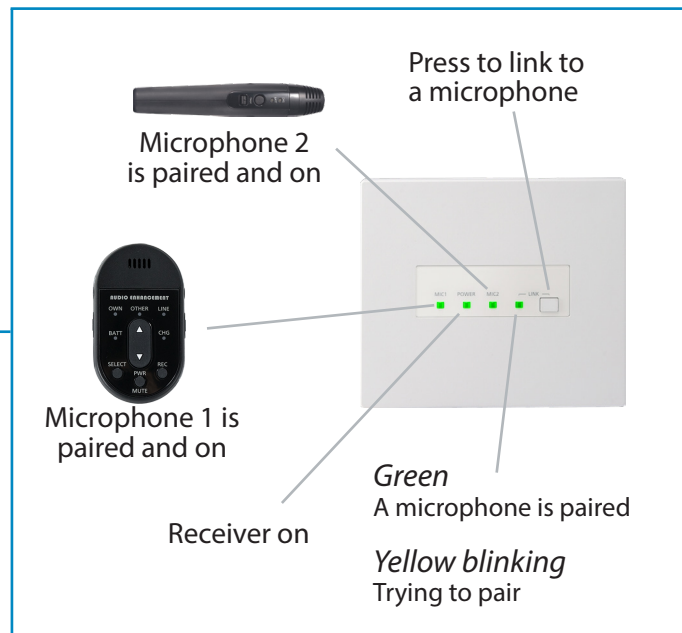
*Blinking (2 sec)*  
Battery is charging

*Blinking (0.5 sec)*  
Charging error

## How to pair a microphone

1. Press the LINK button on the receiver
2. On the microphone you wish to pair, simultaneously press and hold the PTR buttons (see front page)
3. You will hear an audible beep
4. The microphone's BATT LED and the Receiver's LINK LED should both glow a steady green

## Receiver



## Microphone Tips & Tricks

- Wear the mic 4-6 inches below your chin
- Charge your microphone nightly
- Speak in a normal conversational tone
- Don't turn up the volume too high. If you can hear your voice through the speakers, it's too loud. Invite another person to help you set the volume
- Use microphone daily for best results

### Find more Tips & Tricks at

*http://www.  
AudioEnhancement.com/MicTips*

Contact support with any technical questions

**AudioEnhancement.com/Support-Center · 800.932.3578**