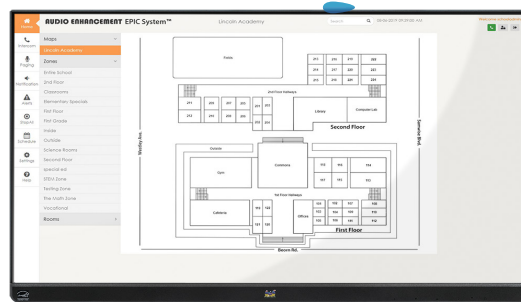




## Because intercom paging and bells... Should be intuitive and easy



The EPIC System Console is a compact computing device specifically designed to power front-end interactions of EPIC (Education Paging and Intercom Communications) System™. The console features a 22" (21.5" viewable) Full HD multi-touch display. EPIC System Console also includes a paging microphone that provides crystal-clear audio, ensuring important paging and intercom messages will be heard perfectly by their intended recipients.

### Intuitive design for EPIC SYSTEM

The EPIC System Console was designed to provide an intuitive, interactive user experience specifically for the EPIC System user interface.

### EPIC System Console Features:

- Responsive and accurate touchscreen
- Edge to edge frame less design
- Crystal-clear audio through paging microphone
- Full-duplex microphone with built-in speaker for talk back functionality
- 3.5 mm input for connecting external audio devices

## Console Specifications

Motherboard	NUC7i3DNH
Ports	(4) USB 3.0, (2) HDMI, (1) Gib network
Processor	7th Generation i3 Processor
Memory	8 GB DDR4 2400 MHz RAM
Drive	120 GB SSD
Size	Display - 22.0 in. (55.88 cm) Viewable Area - 21.5 in. (54.61 cm)
Panel Type	IPS
Resolution	1920x1080
Static Contrast Ratio	1,000:1
Dynamic Contrast Ratio	50,000,000:1
Brightness	250 cd/m2
Colors	16.7 M
Response Time (Typical GTG)	14 ms
Panel Surface	Anti-glare, Hard coating 7H
Connectors	USB 3.0 Type A(2), USB 3.0 Type B(1), HDMI(1), Power in (DC 19V/2.37A)
Touch Technology	Capacitive
Internal Speakers	3 W (x2)
Touchscreen Power NUC Power	Consumption (typical): 25 W 15 W
Voltage	AC 100-240 V (universal), 50-60 Hz
Video Signal	Frequency Horizontal: 24~82 kHz Frequency Vertical: 50~76 Hz
Ergonomics	Tilt (Forward/Back): 20 degrees ~ 70 degrees
Operating System	Windows® 8 / 7 / Vista®/ XP® / 2000 / MacOS®X / most linux versions without special USB sound drivers (plug & play)
Capsule Type	Back Electret condenser with cardioid polar pattern
Sensitivity	-37 dBat1 kHz, SPL=1Pa
ADC sample resolution and rates	16 bit mono and up to an exceptional 48 kHz for both recording and playback
ADC SNR	92 dBati fs=48 kHz, 1 kHz at 1 PA
ADC THD	0.003% at fs=48 kHz, 1 kHz at 1 PA
Frequency response and output impedance	80 - 20,000 Hz and 1700 ohms
Sound ports	Standard 3.5 mm mono mic-in and 3.5 mm stereo out with 3 W
Microphone power supply	From the USB port of the PC (no need for batteries)
Microphone unique features	'Speech Equalizer (EQ)' and 'Automatic Gain Control (AGC)' or amplifier to automatically increase the volume while the user moves away from the microphone. High and Low Pass filters, 'Digital Signal Process (DSP)
Variable dictation distance	From a minimum of 4 in - 20 in. (10 cm up to 50 cm) and more, depending on your voice and ambient noise. Optimal distance is 10 in. (25 cm)
Weight	Net - without stand: 13.75 lbs (6.23 kg) Gross - 16.25 lbs (7.37 kg)
Dimensions	19.3 (W) x 11.8 (H) x 7.2 (D) in. (49.02 x 29.97 x 18.28 cm)
Microphone dimensions	7.8 (W) x 12.4 (H) x 1.7 (D) in. (19.81 x 31.49 x 4.31 cm)



Audio Enhancement products are RoHS and UL compliant.

\*EPIC System Console Paging Microphone is not UL Listed

