

Setting up the MS-1000

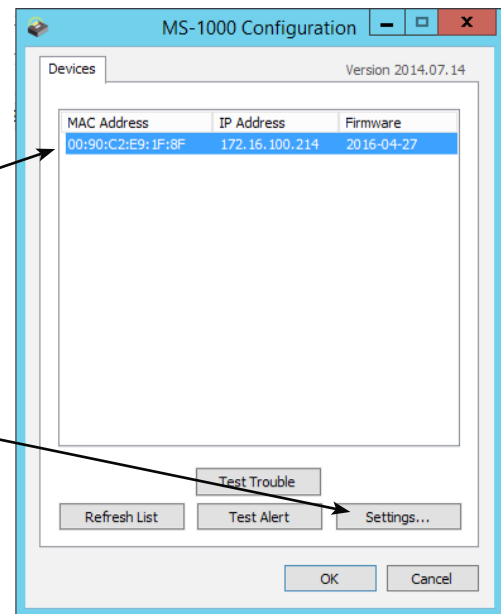
The MS-1000 requires downloaded software in order to set the IP Address, Sub net Mask, and Default gateway. The software is "MS-1000 Config" and can be downloaded from the Downloads section of the Audio Enhancement website AudioEnhancement.com.

Step 1 - Before running the MS-1000 Config software, connect the MS-1000 to the network with a standard CAT6 cable.

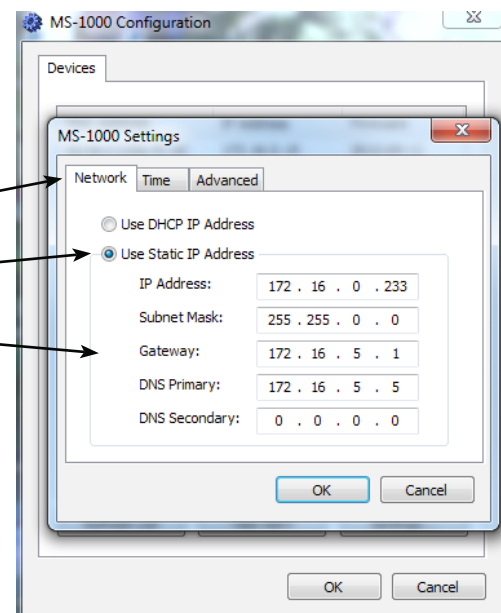
Step 2 - Download and run the install program from your download directory.

Step 3 - Start the program, this screen should pop up.

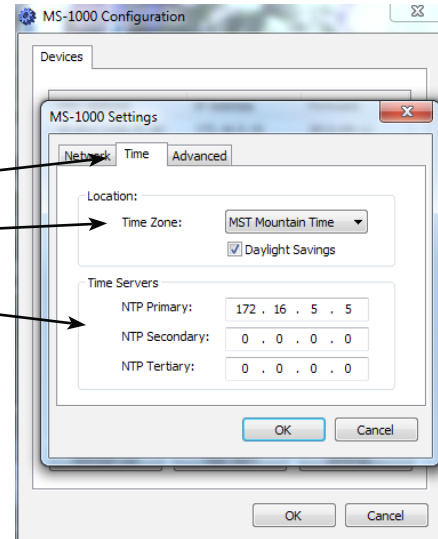
Step 4 - Double click the MS-1000
OR
Highlight and click "Settings"



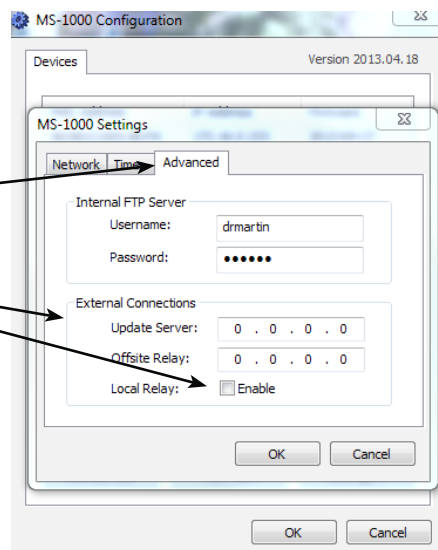
Step 5 - The first tab is the "Network" tab
Click "Use Static IP Address"
Network settings: get these from the IT Department



Step 6 - The second tab is the "Time" tab
 Set the Time Zone
 Time Settings: get these from the IT Department
 Do **NOT** click OK yet



Step 7 - The third tab is the "Advanced" tab
 Set these when there are multiple MS-1000s
NOW click OK



Step 8 - From here, send a "Test Alert" through the network

